

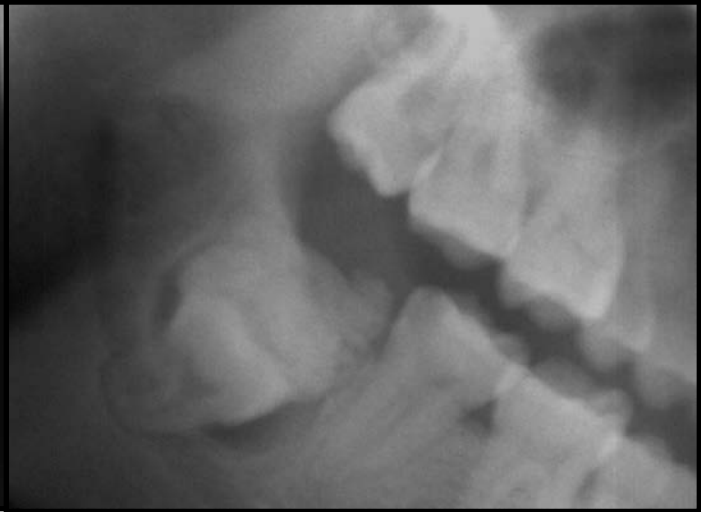
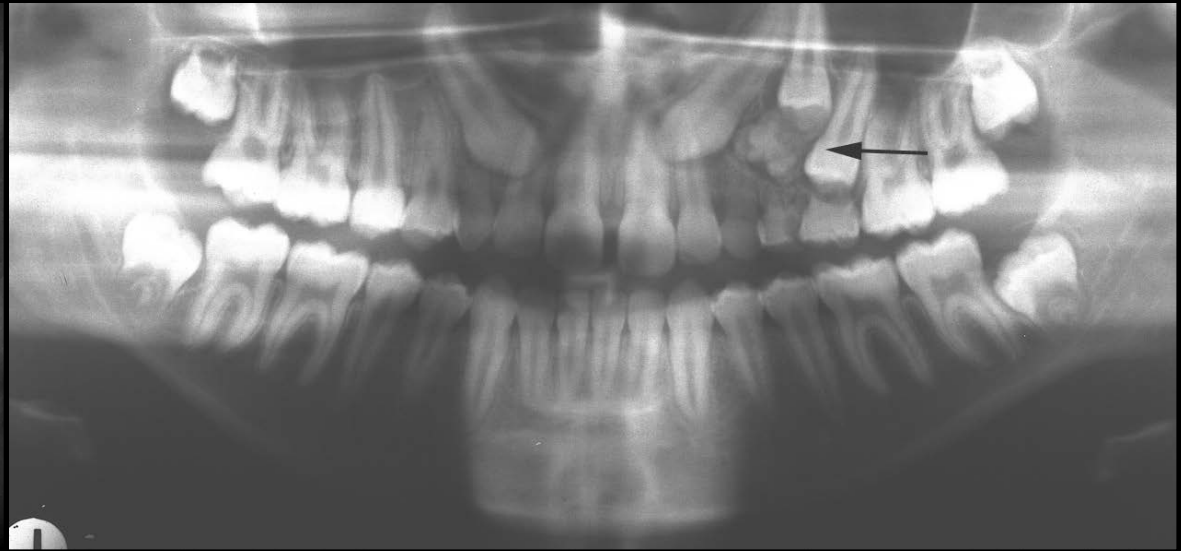
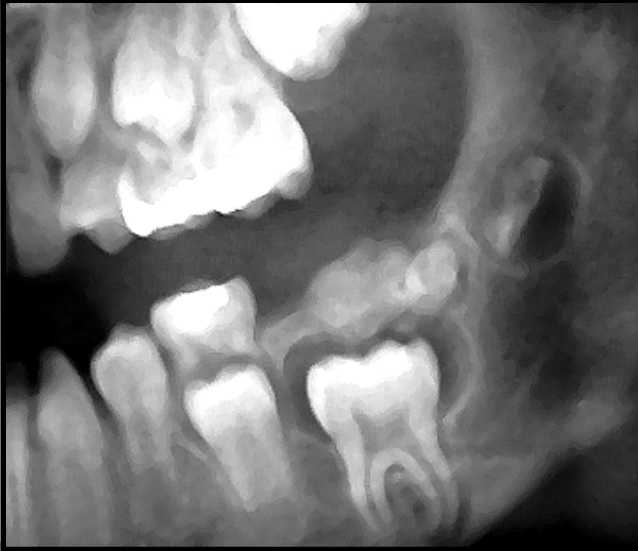
Pericoronar Mixed Lucent/Opaque Lesions

- Odontoma
- Adenomatoid Odontogenic Tumor
- Ameloblastic Fibro-odontoma
- Odontoameloblastoma
- Calcifying Epithelial Odontogenic Tumor
- Calcifying Epithelial Odontogenic Cyst

Odontoma

- **Configuration:**
 - **Toothlike – composite**
 - **Irregular - complex**
- **Teens, young adults**
- **Usually less than 2 cm**
- **Expansion**
- **Failure of eruption**
- **Enucleation**

Odontoma



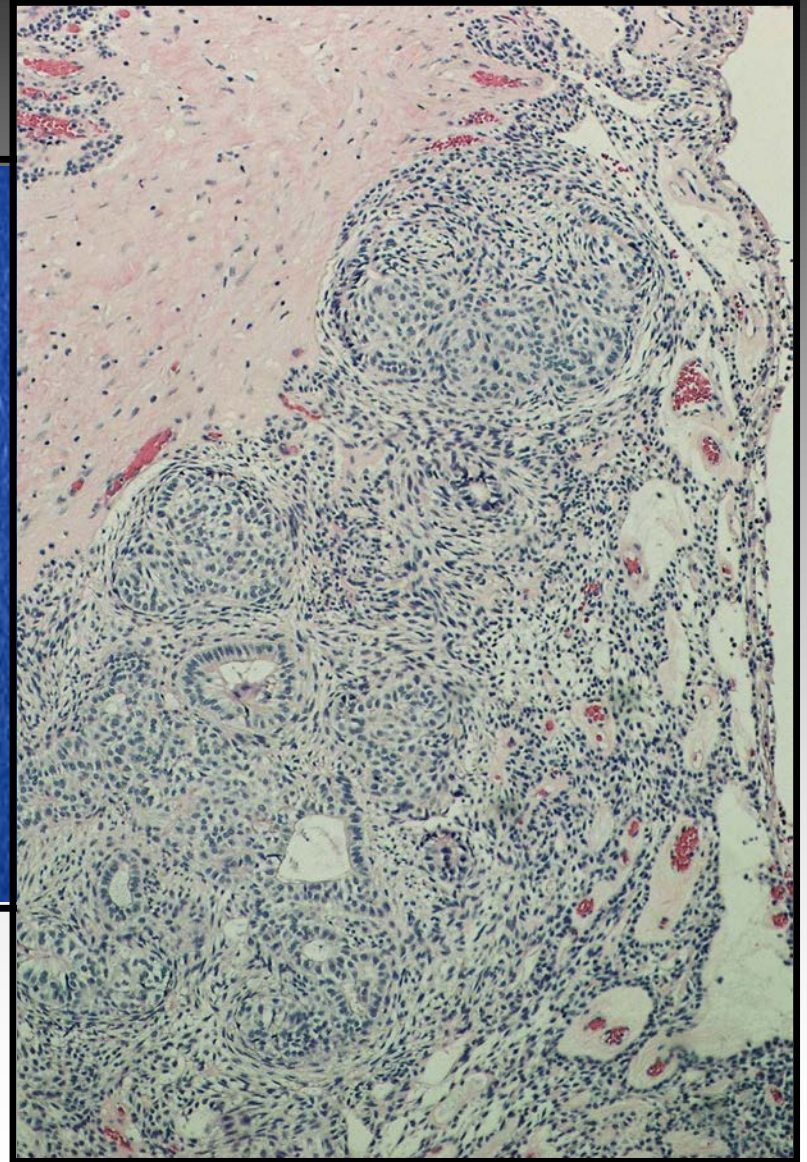
Odontogenic Adenomatoid Tumor

- **Anterior Jaw**
- **Impacted anterior tooth**
- **Teens, young adults**
- **Females > males**
- **Expansile**
- **Enucleation**

Adenomatoid Odontogenic Tumor



AOT



Ameloblastic Fibro-Odontoma

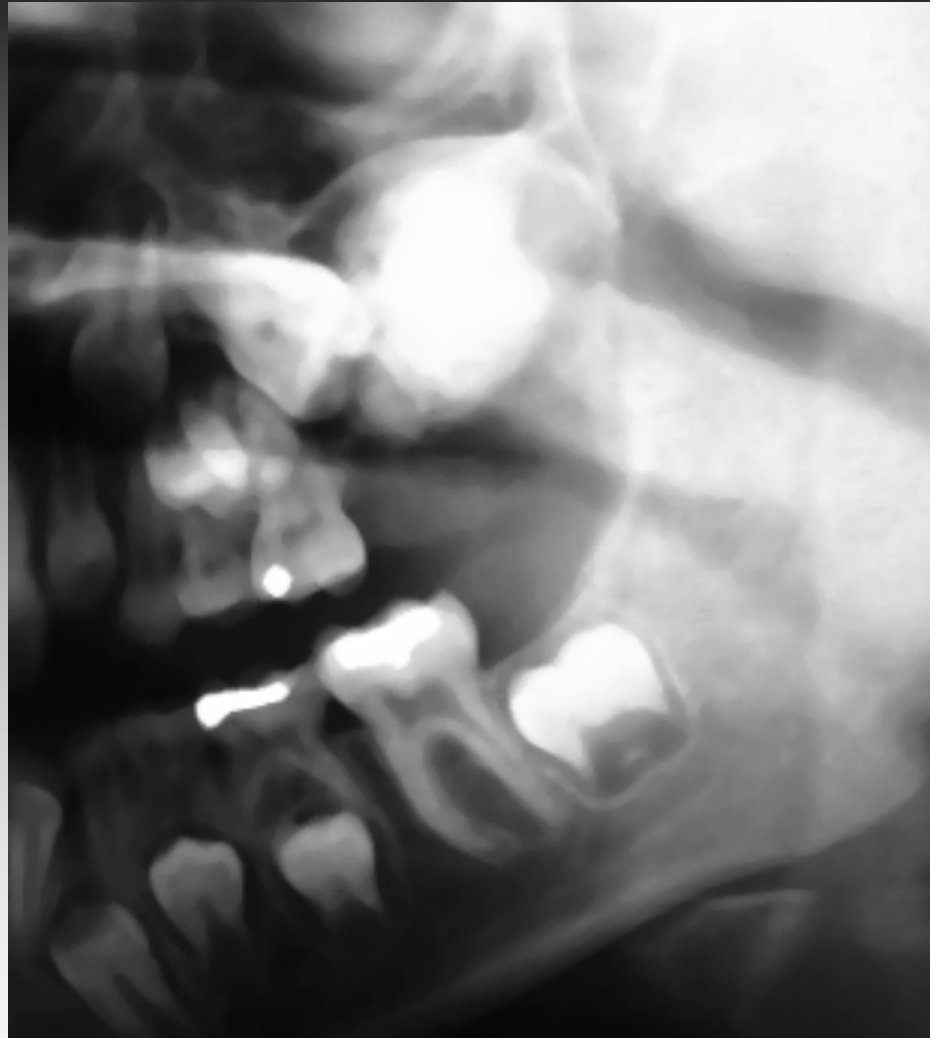
- **Multiple toothlike opacities**
- **Teens, young adults**
- **Large, over 2 cm**
- **Expansion**
- **Failure of eruption**
- **Enucleation**



Ameloblastic Fibro-odontoma

Odontoameloblastoma

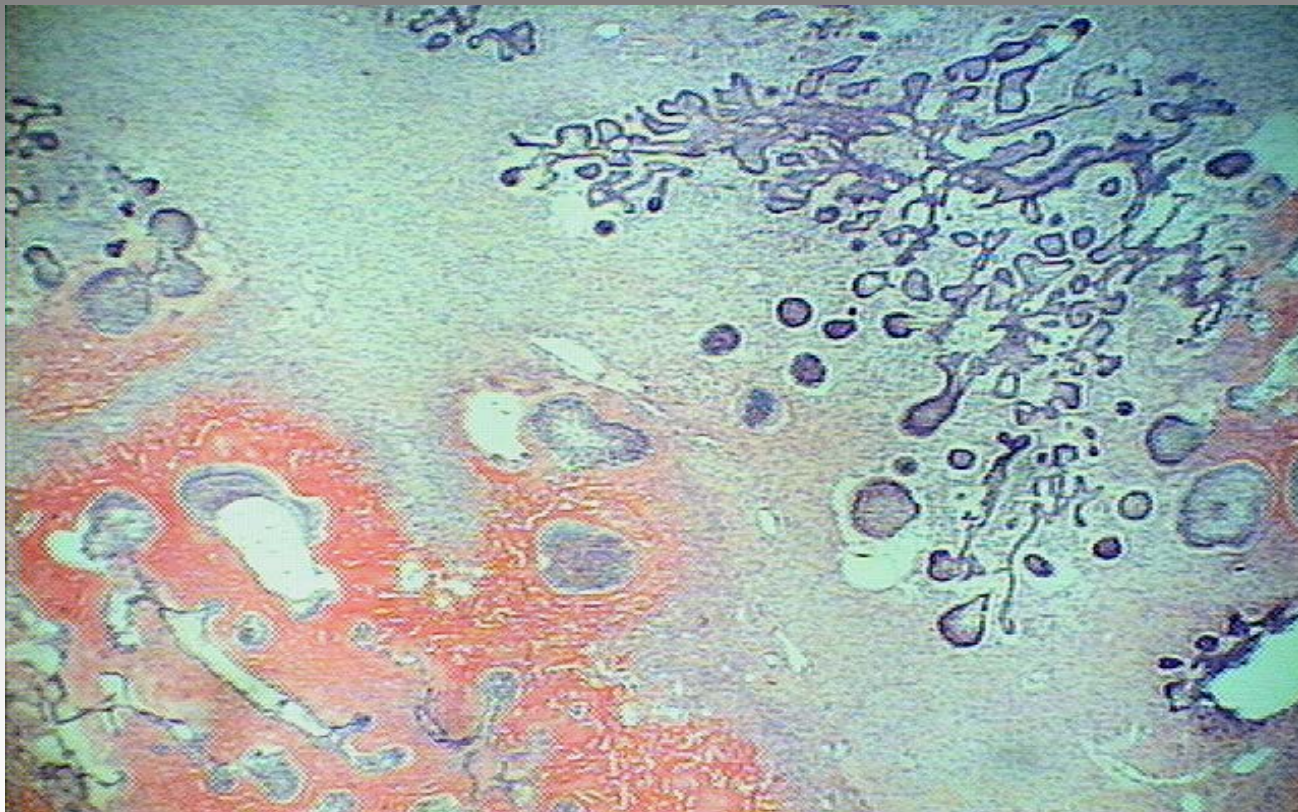
- **Very rare tumor**
- **An odontoma with ameloblastoma**
- **Teens, young adults**
- **Large > 2 cm**
- **Expansion**
- **Failure of eruption**
- **Enucleation or Resection**



Odontoameloblastoma

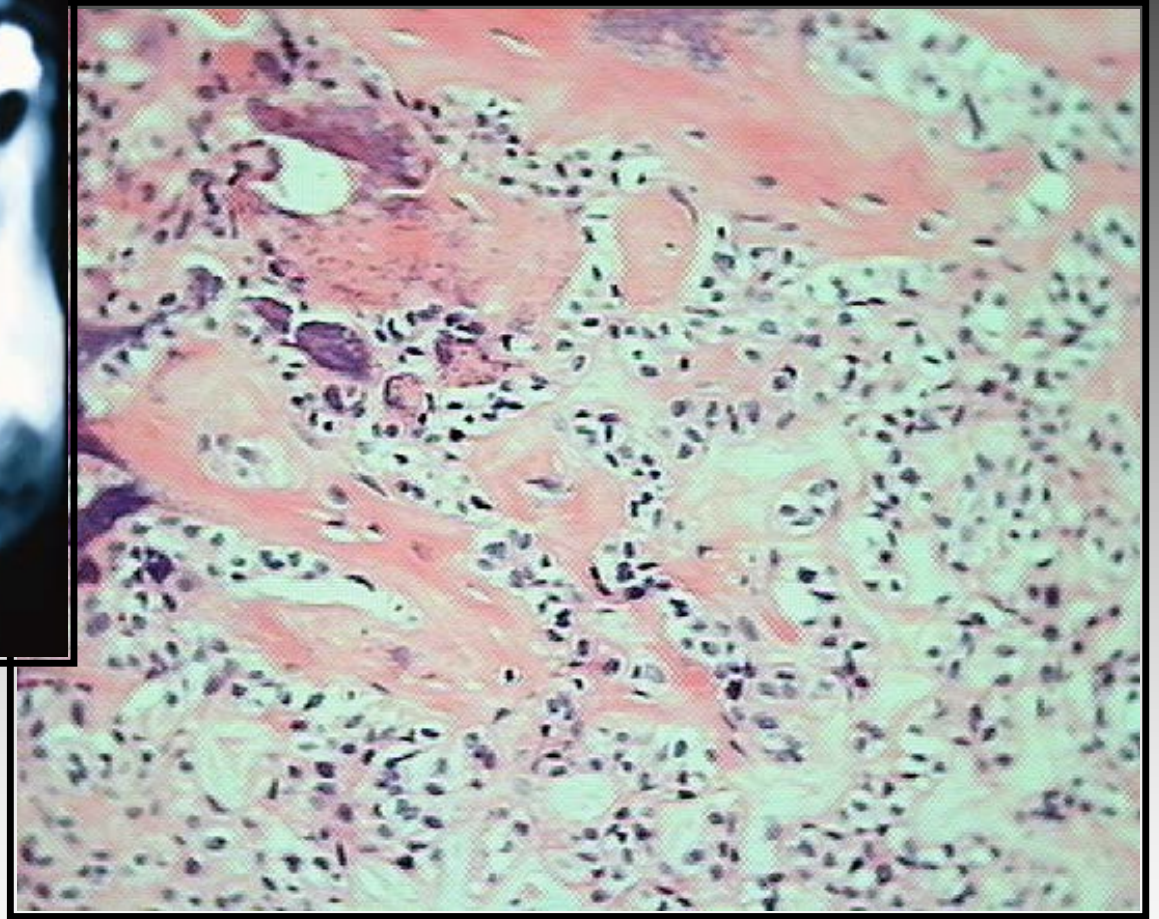
Odontoameloblastoma

- Odontoma component
 - Ameloblastic component

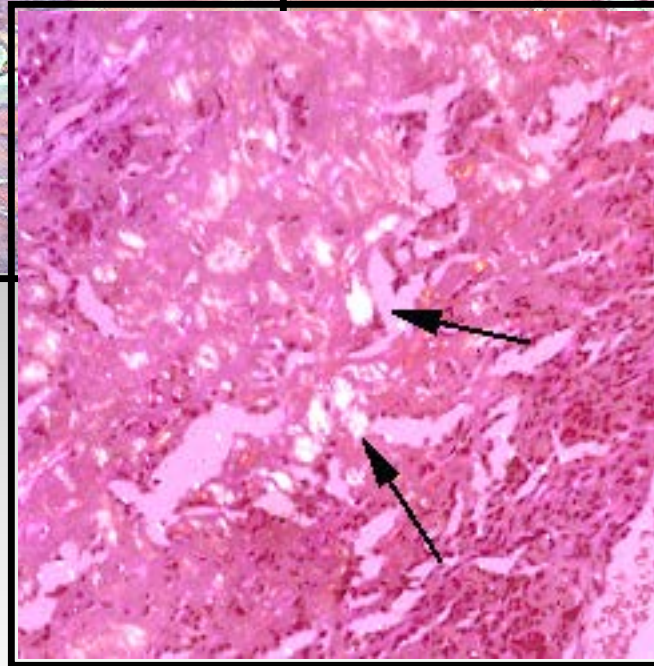
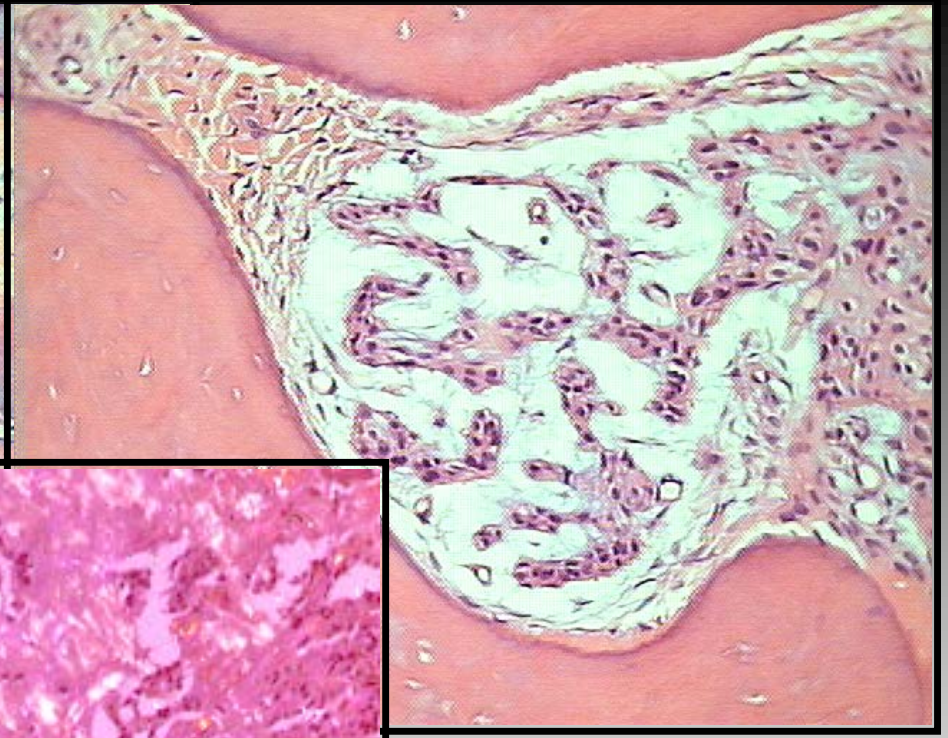
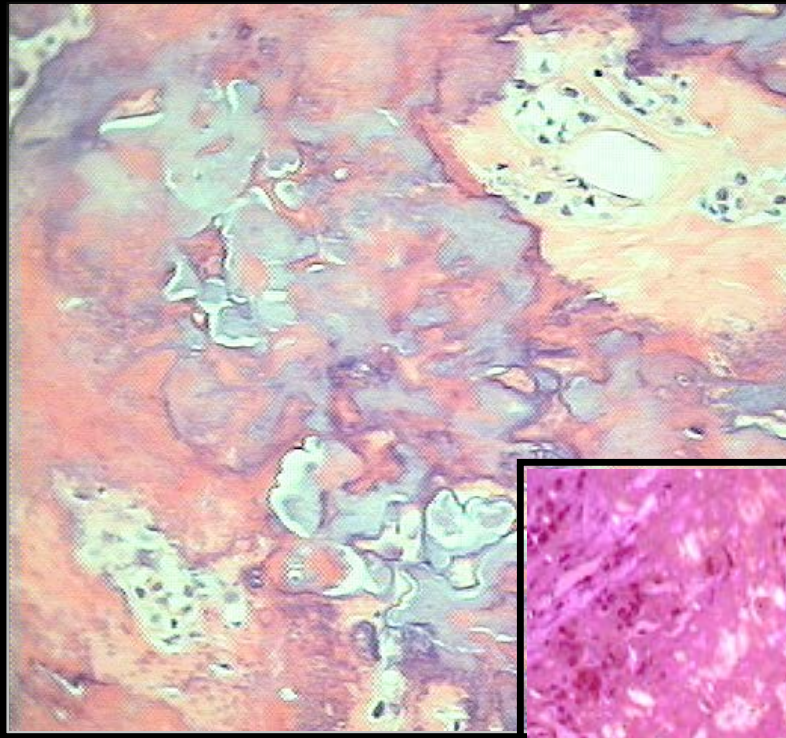


Calcifying Epithelial Odontogenic Tumor (Pindborg)

- **Irregular calcifications, often poorly marginated**
- **Adults**
- **Expansion**
- **Failure of eruption**
- **Enucleation/En bloc Resection**



Calcifying Epithelial Odontogenic Tumor



amyloid

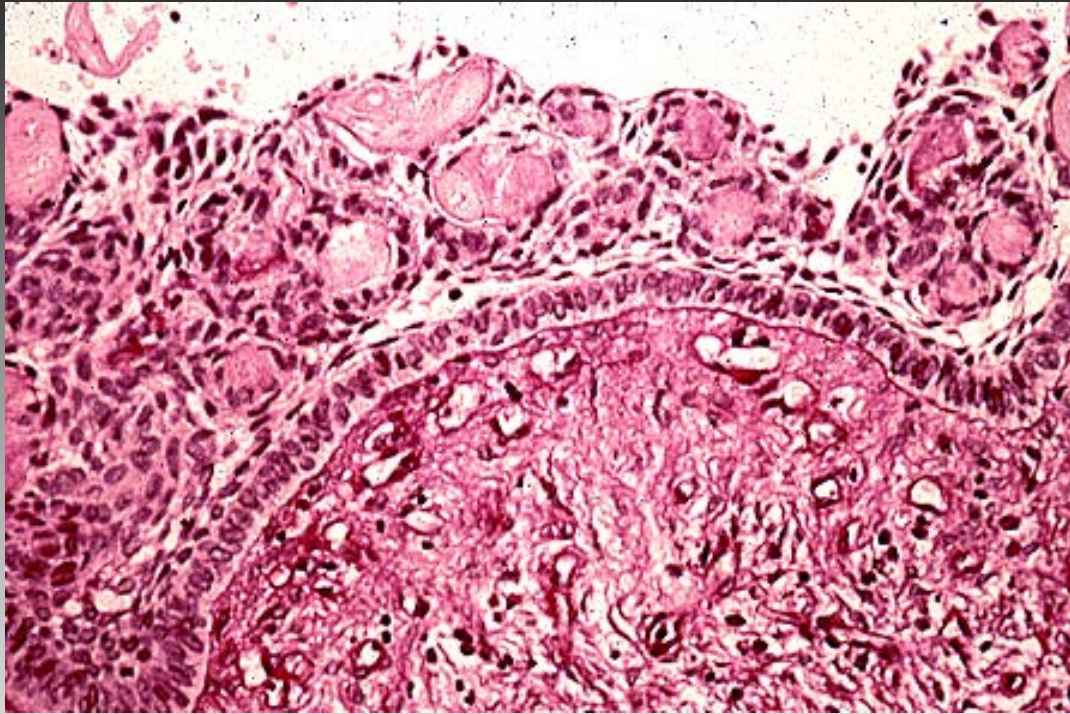
Calcifying Epithelial Odontogenic Tumor

Calcifying Epithelial Odontogenic Cyst (Gorlin)

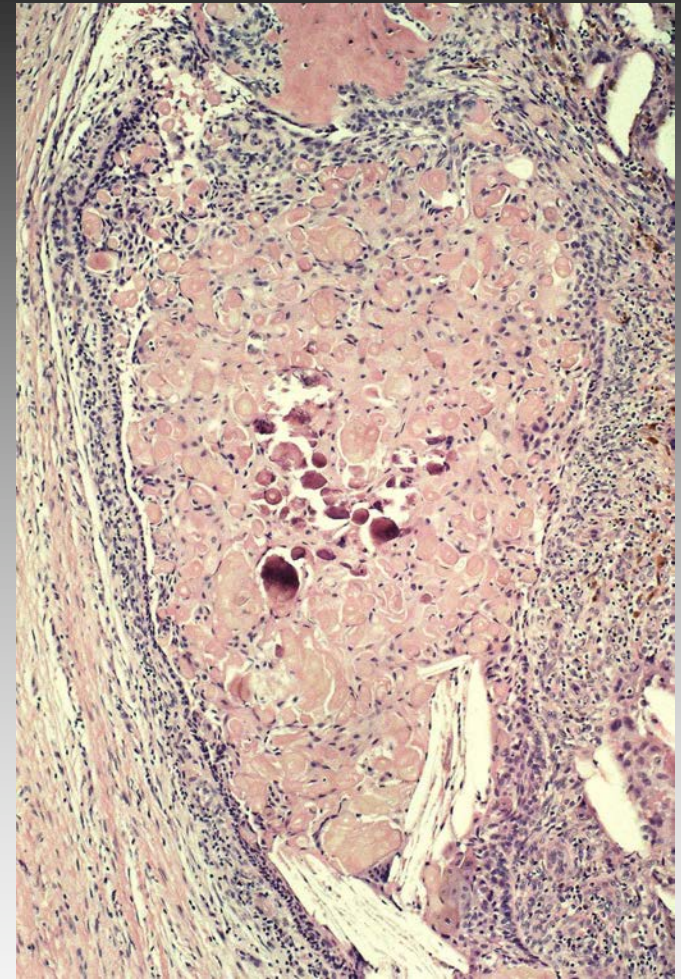
- **Irregular calcifications, well marginated**
- **Adults**
- **Expansion**
- **Failure of eruption**
- **Often with Odontoma**
- **Enucleation**
- **Solid Variant: Odontogenic Ghost Cell tumor**



Calcifying Epithelial Odontogenic Cyst



Calcifying Epithelial Odontogenic Cyst



Odontogenic Ghost Cell Tumor